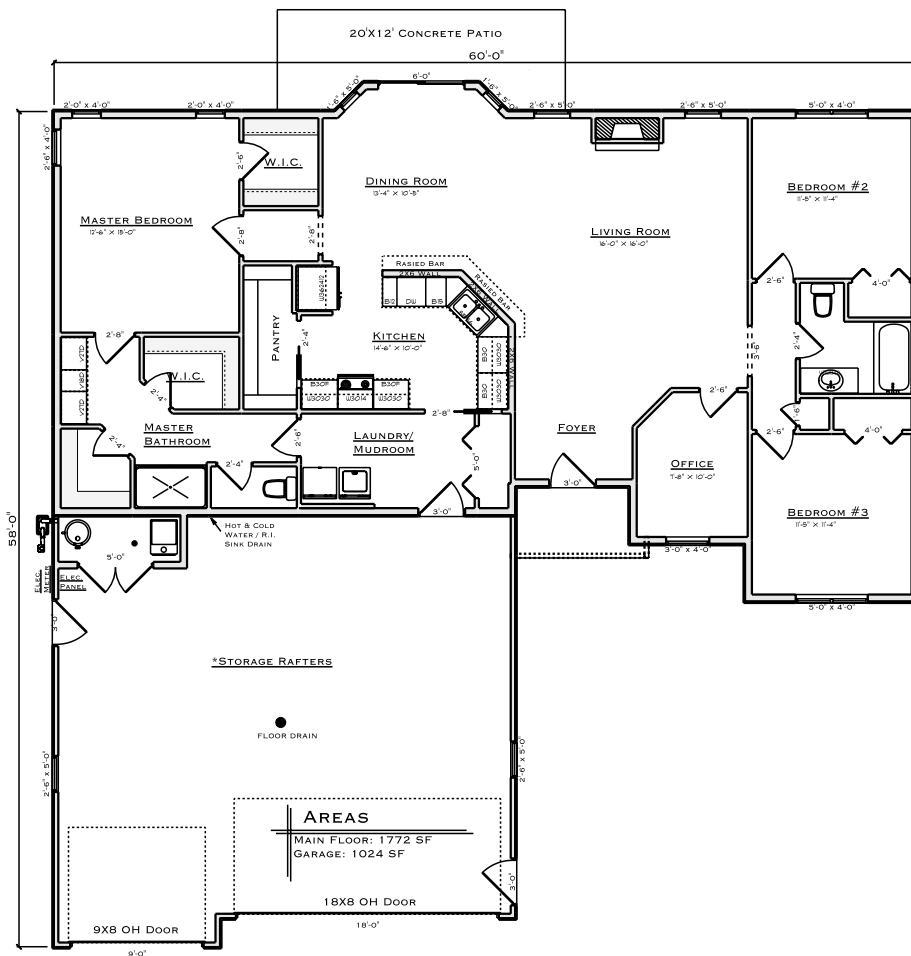


SATTTLER HOMES



4816 MALTBY STREET
SUNRISE ADDITION - NE BISMARCK ND
\$359,900 - ALL SPECIALS PAID



- 1772 SF HOME
- 1024 SF GARAGE
- 9' MAIN FLOOR WALLS
- COVERED ENTRYWAY
- LARGE KITCHEN W/
WALK IN PANTRY
- 3 BED 2 BATHS
- OFFICE OFF LIVING ROOM
- GAS FIREPLACE
- LARGE MASTER SUITE W/
WIC AND BATH
- LARGE FINISHED GARAGE
- HOT & COLD WATER
- GARAGE FLOOR DRAIN

FOR MORE INFORMATION CONTACT:
JEFF SATTTLER - (701) 255-7628
JEFF@BISMARCKBUILDER.COM