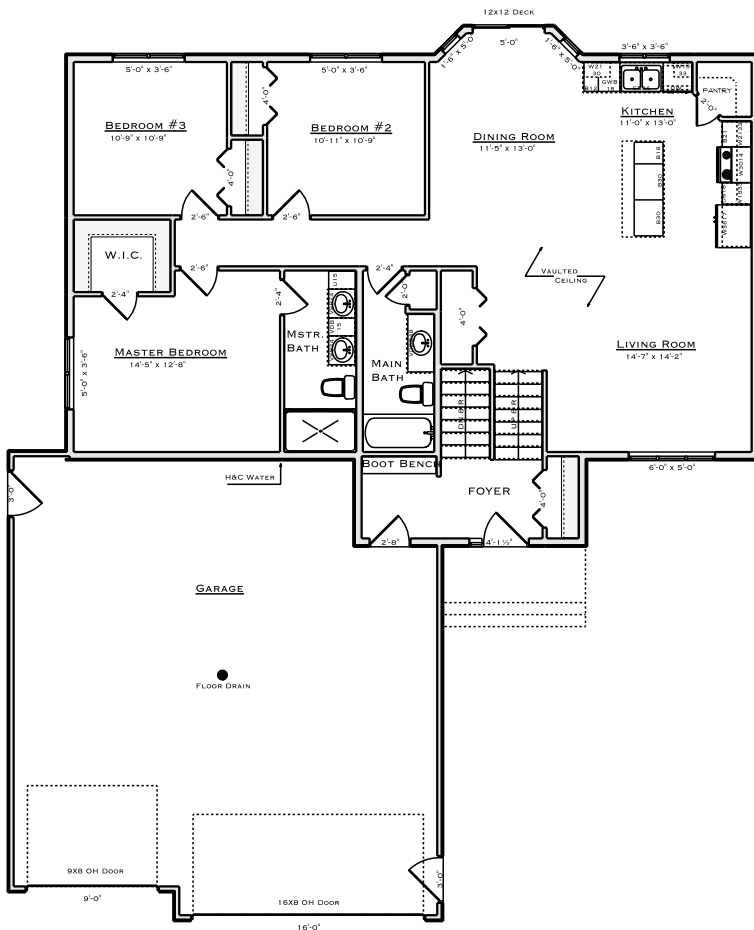


SATTTLER HOMES



4808 MALTBY STREET
BISMARCK ND 58503
\$349,900 (ALL SPECIALS PAID)



3 BED 2 BATH SPLIT ENTRY
1456 SF MAIN FLOOR
1440 SF UNFINISHED BSMT
COVERED ENTRY
MAPLE CABINETS
QUARTZ COUNTERTOPS
12X12 DECK W/ STAIRS
OVERSIZED 3 STALL GARAGE
H&C WATER
R.I. UNIT HEATER
SPRINKLER SERVICE LINE
SOUTH FACING LOT
ROOM FOR PARKING PAD
10,467 SF LOT

FOR MORE INFORMATION CONTACT:
JEFF SATTTLER - (701) 255-7628
JEFF@BISMARCKBUILDER.COM