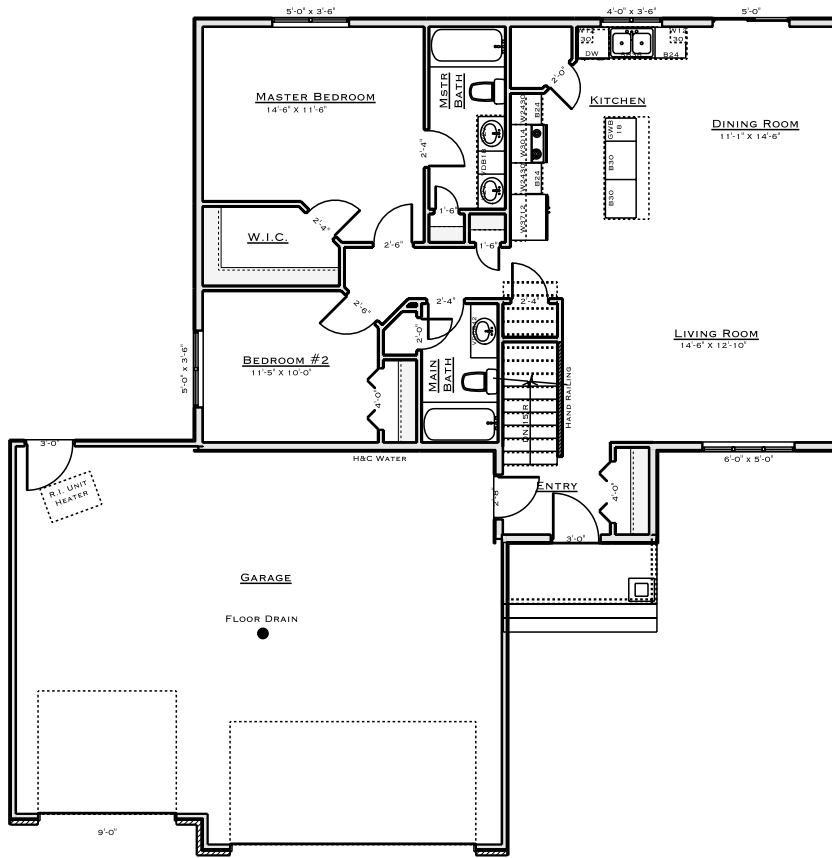


# SATTTLER HOMES



**3407 TYNDALE DRIVE  
BISMARCK ND 58503**

**\$399,900 - BSMT UNFIN  
\$449,900 - BSMT FINISHED**

1226 SF MAIN FLOOR  
1226 SF UNFIN BASEMENT  
2 BED 2 BATH RANCH HOME  
WEST FACING HOME, NE BISMARCK  
LARGE KITCHEN W/ PANTRY  
OPEN KIT/DIN/LIVING ROOM  
VAULTED CEILING  
MSTR BEDROOM W/ BATH  
MSTR WALK IN CLOSET  
OVERSIZED 3 STALL GARAGE  
2X6 EXTERIOR WALLS  
78'x145' LOT  
ROOM FOR PARKING PAD  
SCHOOL DISTRICT  
SUNRISE ELEMENTARY  
SIMLE MIDDLE SCHOOL  
LEGACY HIGH SCHOOL

FOR MORE INFORMATION CONTACT:  
JEFF SATTTLER - (701) 255-7628  
JEFF@BISMARCKBUILDER.COM