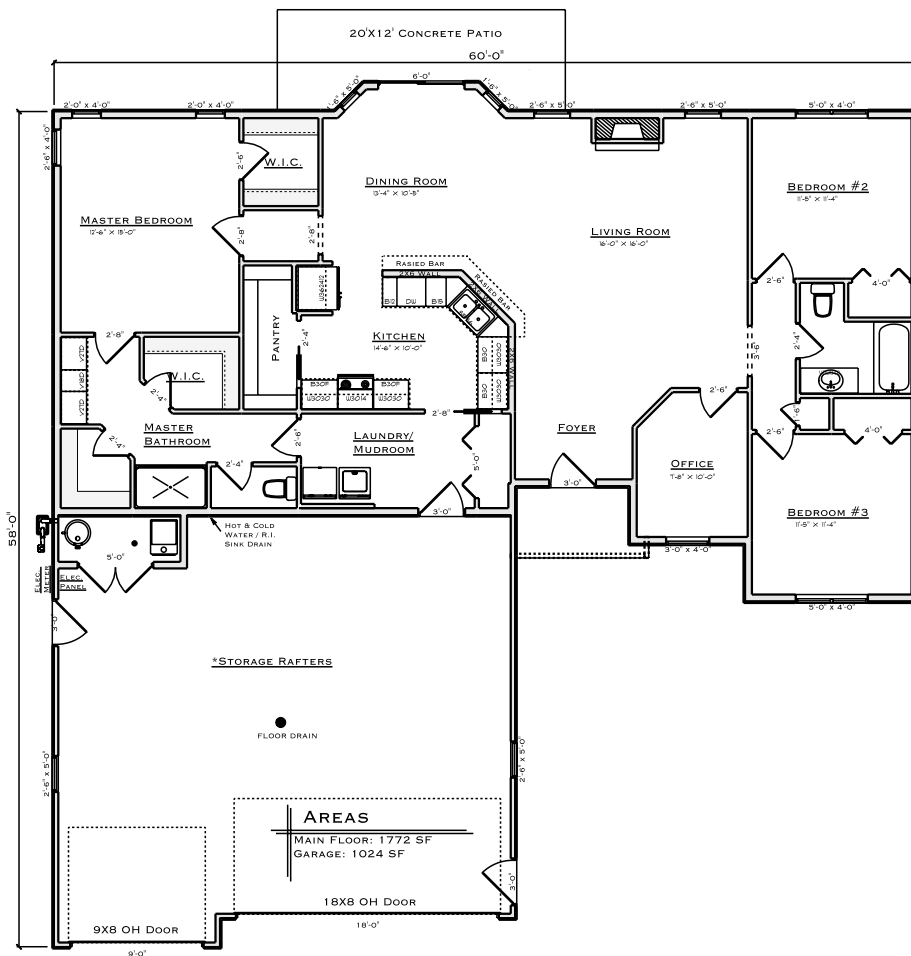


SATTTLER HOMES



4816 MALTBY STREET
SUNRISE ADDITION - NE BISMARCK ND
\$379,900 - ALL SPECIALS PAID



- 1772 SF HOME
- 1024 SF GARAGE
- 9' MAIN FLOOR WALLS
- COVERED ENTRYWAY
- LARGE KITCHEN W/
WALK IN PANTRY
- 3 BED 2 BATHS
- OFFICE OFF LIVING ROOM
- GAS FIREPLACE
- LARGE MASTER SUITE W/
WIC AND BATH
- LARGE FINISHED GARAGE
- HOT & COLD WATER
- GARAGE FLOOR DRAIN

FOR MORE INFORMATION CONTACT:
JEFF SATTTLER - (701) 255-7628
JEFF@BISMARCKBUILDER.COM



4816 Maltby Street - \$379,900 (Specials Paid!!)

This 3-bedroom 2-bathroom patio home located close to Sunrise Elementary and Sunrise Centre in the NE growing Bismarck. As you enter this home you are immediately greeted with an open concept. The large living space has a gas fireplace vinyl plank flooring and raised ceiling. The kitchen offers quartz countertops and walk in pantry open to the large dining room and living room. Relax on a large concrete patio off the dining room. Three desirable bedrooms including the master bedroom suite w/ his and hers walk in closets and 3/4 bath. There is no shortage of great spaces in this home! The finished 3 stall over-sized garage is perfect for storage and for all the cars and toys and has all the extras! Heated, water hook ups and drains!



Jeff Sattler
701-255-7628
jeff@bismarckbuilder.com

SATTTLER
HOMES