

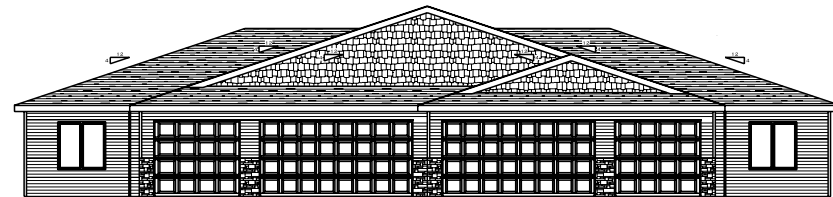
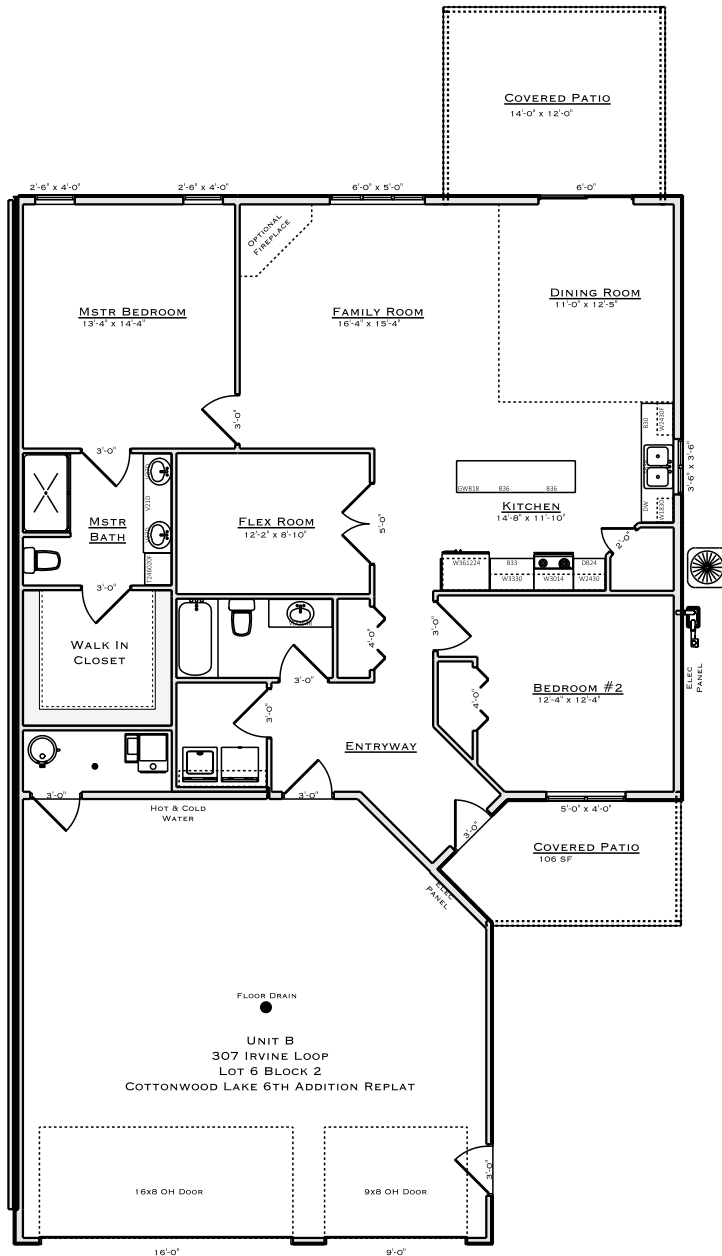
SATTLER HOMES

307 IRVINE LOOP - BISMARCK ND
1618 SF HOUSE, 805 SF GARAGE
\$329,900 - SPECIALS PAID

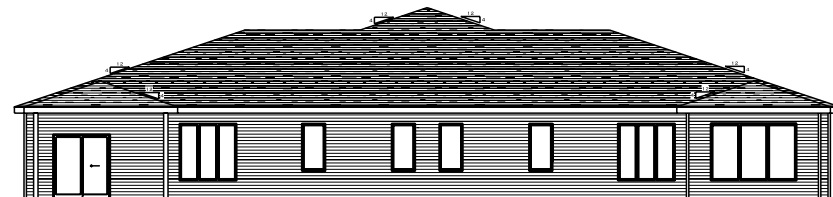
9' TALL WALLS
2X6 EXTERIOR WALLS
3 STALL GARAGE
FIREPLACE
LARGE KITCH W/ PANTRY
2 BEDROOMS
2 BATHROOMS
FLEX ROOM

SUNROOM ROOM
COVERED FRONT PORCH
12'X12' PATIO
HEATED GARAGE
FLOOR DRAIN
H&C WATER IN GARAGE
LARGE W.I.C.
95% EFF. FURNACE

FOR MORE INFORMATION
JEFF SATTLER (701) 255-7628
JEFF@BISMARCKBUILDER.COM



FRONT ELEVATION
305 & 307 IRVINE LOOP



REAR ELEVATION
305 & 307 IRVINE LOOP